



Client



**NATURAL SOURCING**  
Essential and Personal Care Ingredients Certified  
Manufactured in the United States

Source



*Spearmint (Mentha spicata)*  
1J01F2

Sample

**Spearmint (Mentha spicata)**

Batch #:..... 1J01F2

Type:..... Essential Oil

CAS Number:... 8008-79-5

**Natural Sourcing LLC**

Client



**NATURAL SOURCING**  
Essential and Personal Care Ingredients Certified  
Manufactured in the United States

Website

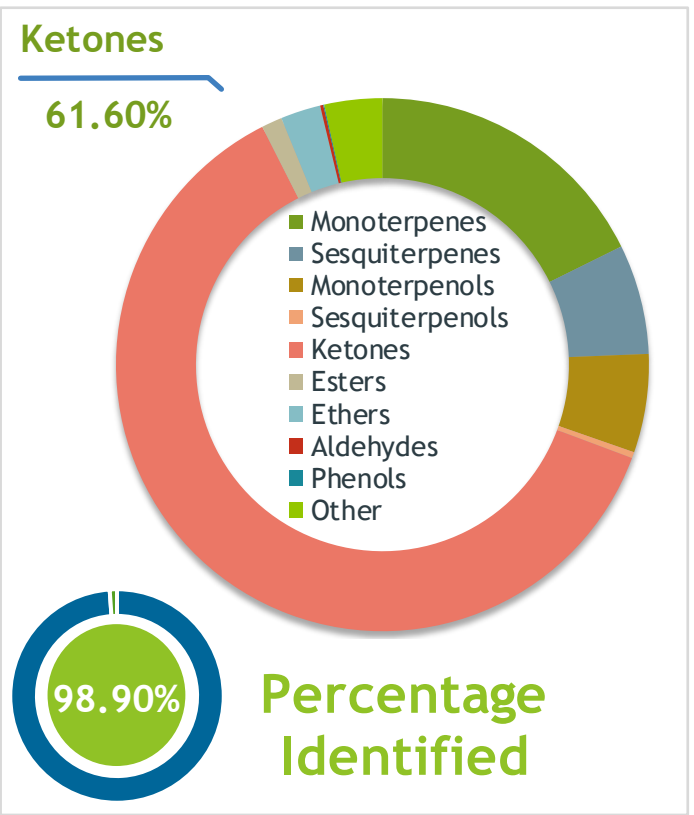


Primary

**59.37%** | Carvone

**11.00%** | Limonene

**3.20%** | Myrcene



Result



Conclusion

No adulterants, diluents, or contaminants were detected via this method. This oil meets the expected profile for genuine Essential Oil of Spearmint (*Mentha spicata*)

Internal Number: | EVS-3747



**Essential Validation Services**

747 SW 2nd Ave IMB 12 Suite 306  
Gainesville, FL 32601

317.361.5044 | <https://essentialvalidationservices.com/>

adam@essentialvalidationservices.com



Monoterpenes	17.62%	17.62%
Sesquiterpenes	6	6.64%
Monoterpenols	5	5.95%
Sesquiterpenols	0.37%	0.37%
Ketones	61.60%	61.60%
Esters	1.25%	1.25%
Ethers	2.42%	2.42%
Aldehydes	0.19%	0.19%
Phenols	0.06%	0.06%
Other	3.50%	3.50%

ESSENTIAL VALIDATION SERVICES | 747 SW 2<sup>ND</sup> AVE GAINESVILLE, FLORIDA 32601 | 317-361-5044

- Essential Oil testing is performed by using qualitative GC-MS. Method: SOP.T.01 Client Method  
 - This report may not be published without the consent of Essential Validation Services.  
 - Chromatograph image may be requested  
 - This report is valid for 1 year from the analyzed date

Client



Source

Spearmint (*Mentha spicata*)

1J01F2

Total Percentage		98.90%		
Number	RT	Area %	Compound Name	Chemical Family
1	5.73	0.02%	2-Methylbutyric acid	Aliphatic Acid
2	5.84	0.04%	(E)-2-Hexenal	Aliphatic Aldehyde
3	5.91	0.05%	cis-Hex-3-en-1-ol	Aliphatic Alcohol
4	6.22	0.04%	(E)-2-Hexenol	Aliphatic Alcohol
5	6.34	0.02%	1-Hexanol	Aliphatic Alcohol
6	7.22	0.11%	2,5-Diethyltetrahydrofuran	Furan
7	8.05	0.13%	Hashishene	Monoterpene
8	8.30	0.06%	alpha-Thujene	Monoterpene
9	8.56	0.60%	alpha-Pinene	Monoterpene
10	9.19	0.02%	Camphene	Monoterpene
11	9.66	0.01%	Benzaldehyde	Simple Phenolic
12	10.15	0.49%	Sabinene	Monoterpene
13	10.32	0.71%	beta-Pinene	Monoterpene
14	10.51	0.02%	1-Octen-3-ol	Aliphatic Alcohol
15	10.71	0.04%	Octan-3-one	Aliphatic Ketone
16	10.90	3.20%	Myrcene	Monoterpene
17	11.23	1.53%	3-Octanol	Aliphatic Alcohol
18	11.48	0.12%	Octanal	Aliphatic Aldehyde
19	12.04	0.35%	2-Carene	Monoterpene
20	12.38	0.09%	para-Cymene	Monoterpene
21	12.62	11.00%	Limonene	Monoterpene
22	12.70	2.33%	1,8-Cineole	Monoterpene Ether
23	12.96	0.20%	(Z)-beta-Ocimene	Monoterpene
24	13.43	0.10%	(E)-beta-Ocimene	Monoterpene
25	13.77	0.02%	Santolina alcohol	Monoterpenol
26	13.91	0.59%	gamma-Terpinene	Monoterpene
27	14.43	1.48%	trans-Sabinene hydrate	Monoterpenol
28	14.56	0.05%	1-Octanol	Aliphatic Alcohol
29	14.69	0.01%	Bergamal	Aliphatic Aldehyde
30	15.15	0.16%	Terpinolene	Monoterpene
31	15.35	0.02%	para-Cymenene	Monoterpene
32	15.44	0.01%	6,7-Epoxy-myrcene	Monoterpene Ether
33	15.85	0.30%	Linalool	Monoterpenol
34	16.03	0.07%	2-Methylbutyl 2-methylbutyrate	Aliphatic Ester
35	16.19	0.01%	Isoamyl isovalerate	Aliphatic Ester

ESSENTIAL VALIDATION SERVICES | 747 SW 2<sup>ND</sup> AVE GAINESVILLE, FLORIDA 32601 | 317-361-5044

Client



Source

Spearmint (*Mentha spicata*)

1J01F2

Number	RT	Area %	Compound Name	Chemical Family
36	16.289	0.02%	1-Octenyl-3 acetate	Aliphatic Ester
37	16.83	0.57%	Octan-3-yl acetate	Aliphatic Ester
38	16.92	0.08%	cis-para-Menth-2-en-1-ol	Monoterpenol
39	17.18	0.03%	Alloocimene	Monoterpene
40	17.31	0.01%	cis-Limonene oxide	Monoterpene Ether
41	17.51	0.07%	trans-Limonene oxide	Monoterpene Ether
42	17.63	0.05%	trans-Pinocarveol	Monoterpenol
43	17.75	0.07%	trans-para-Menth-2-en-1-ol	Monoterpenol
44	17.89	0.05%	trans-Verbenol	Monoterpenol
45	18.36	0.02%	Menthone	Monoterpene Ketone
46	18.62	0.01%	Pinocarvone	Monoterpene Ketone
47	18.93	0.06%	para-Mentha-1,5-dien-8-ol	Monoterpenol
48	19.05	0.17%	delta-Terpineol	Monoterpenol
49	19.51	1.63%	Terpinen-4-ol	Monoterpenol
50	19.82	0.06%	6,7-Dihydrogeraniol	
51	20.01	0.01%	Methyl salicylate	Phenolic Ester
52	20.21	0.35%	alpha-Terpineol	Monoterpenol
53	20.31	1.64%	cis-Dihydrocarvone	Monoterpene Ketone
54	20.39	0.86%	neo-Dihydrocarveol	Monoterpenol
55	20.58	0.16%	trans-Dihydrocarvone	Monoterpene Ketone
56	20.79	0.02%	Decanal	Aliphatic Aldehyde
57	20.90	0.02%	trans-Piperitol	Monoterpenol
58	21.03	0.02%	Octyl acetate	Aliphatic Ester
59	21.43	0.48%	trans-Carveol	Monoterpenol
60	21.94	0.05%	cis-3-Hexenyl isovalerate	Aliphatic Ester
61	22.12	0.33%	cis-Carveol	Monoterpenol
62	22.64	59.37%	Carvone	Monoterpene Ketone
63	22.88	0.18%	Piperitone	Monoterpene Ketone
64	23.29	0.05%	18.42 Carvone oxide<cis->	Monoterpene Ketone
65	23.85	0.12%	19.02 Carvone oxide<trans->	Monoterpene Ketone
66	26.06	0.40%	20.48 Dihydro carveol acetate	0.00
67	26.52	0.01%	Piperitenone	Sesquiterpene Ketone
68	26.89	0.04%	Myrtenyl acetate	Monoterpene Ester
69	27.18	0.05%	Eugenol	Phenylpropanoid
70	27.54	0.46%	trans-Carvyl acetate	Monoterpene Ester
71	28.22	0.06%	alpha-Copaene	Sesquiterpene

ESSENTIAL VALIDATION SERVICES | 747 SW 2<sup>ND</sup> AVE GAINESVILLE, FLORIDA 32601 | 317-361-5044

- Essential Oil testing is performed by using qualitative GC-MS. Method: SOP.T.01 Client Method  
 - This report may not be published without the consent of Essential Validation Services.  
 - Chromatograph image may be requested  
 - This report is valid for 1 year from the analyzed date

Client



Source



*Spearmint (Mentha spicata)*

72	28.55	1.97%	beta-Bourbonene	Sesquiterpene
73	28.84	0.16%	beta-Elemene	Sesquiterpene
74	28.90	0.43%	cis-Jasmone	Jasmonate
75	29.41	0.06%	Longifolene	Sesquiterpene
76	30.02	1.48%	beta-Caryophyllene	Sesquiterpene
77	30.46	0.28%	beta-Copaene	Sesquiterpene
78	31.55	1.15%	(E)-beta-Farnesene	Sesquiterpene
79	31.66	0.02%	alpha-Guaiene	Sesquiterpene
80	31.76	0.04%	cis-Muuroala-3,5-diene	Sesquiterpene
81	32.02	0.13%	6,9-Guaiadiene	Sesquiterpene
82	32.55	1.22%	Germacrene D	Sesquiterpene
83	33.14	0.01%	Bicyclogermacrene	Sesquiterpene
84	34.10	0.06%	beta-Cadinene	Sesquiterpene
85	36.96	0.37%	Viridiflorol	Sesquiterpenol

ESSENTIAL VALIDATION SERVICES | 747 SW 2ND AVE GAINESVILLE, FLORIDA 32601 | 317-361-5044

- Essential Oil testing is performed by using qualitative GC-MS. Method: SOP.T.01 Client Method
- This report may not be published without the consent of Essential Validation Services.
- Chromatograph image may be requested
- This report is valid for 1 year from the analyzed date